

**easYgen-3000**

**‘How to create new complete/partial settings files offline’**

Optional Supplementary Information

## General Information

The following alert boxes can be used in this publication:



“DANGER” indicates a hazardous situation which, if not avoided, will result in death or serious injury.



“WARNING” indicates a hazardous situation which, if not avoided, could result in death or serious injury.



“CAUTION”, used with the safety alert symbol, indicates a hazardous situation which, if not avoided, could result in minor or moderate injury.

**NOTICE**

“NOTICE” is used to address practices not related to personal injury.

**IMPORTANT**

“IMPORTANT” is used to address practices not related to personal injury.

## Personnel



**WARNING!**  
Hazards due to insufficiently qualified personnel!

If unqualified personnel perform work on or with the control unit hazards may arise which can cause serious injury and substantial damage to property.

- Therefore, all work must only be carried out by appropriately qualified personnel.

For further Product Support Options, Product Service Options, Returning Equipment for Repair, and/or Engineering Services please [download application note #37573](#).

## Requirements

This application note describes the procedure of creating and editing a new settings file or a partial settings file for an easYgen-3000 controller –**without actually being connected to the device.**

## Hardware and Software

The following parts are mandatory to follow the instructions of this document:

Device	Part Number	Revision
PC or laptop with an appropriate version of ToolKit running and access to the .wset files to be prepared		

## Documentation



Read this entire application note and all other publications pertaining to the work to be performed before installing, operating, or servicing this equipment. Practice all plant and safety instructions and precautions.

**Failure to follow instructions can cause personal injury and/or property damage!**

**Any unauthorized modifications to or use of this equipment outside its specified mechanical, electrical, or other operating limits may cause personal injury and/or property damage, including damage to the equipment.**

Any such unauthorized modifications: constitute "misuse" and/or "negligence" within the meaning of the product warranty thereby excluding warranty coverage for any resulting damage, and invalidate product certifications or listings.



This publication may have been revised or updated since this copy was produced. If the cover of the publication states "Translation of the Original Instructions", the original source may have been updated since this translation was made.

Be sure to check manual 26311, *Revision Status & Distribution Restrictions of Woodward Technical Publications*, to verify whether this translation is up to date. Always compare with the original for technical specifications and for proper and safe installation and operation procedures. To verify that you have the latest revision, check manual 26311, *Revision Status & Distribution Restrictions of Woodward Technical Publications*, on the publications page of the Woodward website:

[www.woodward.com/publications](http://www.woodward.com/publications)

The latest version of most publications is available on the publications page. If your publication is not there, please contact your customer service representative to get the latest copy.

## Introduction

This application note describes the procedure of creating and editing a new settings file or a partial settings file for an easYgen-3000 controller –without actually being connected to the device.

By creating partial settings the amount of parameter data can be reduced significantly. This helps to save time at commissioning or while maintenance, when there are only a few dedicated parameters needed to be changed on the device.

Complete settings apply to all part numbers.

Partial Settings apply only to the revisions of the respective part numbers below:

Device	Part Number	Revision
easYgen-3100/3200	8440-2049, -2050, -2051, -2052, -2054, -2055, -2056, -2057	E or higher
easYgen-3400/3500 P1	8440-1934, -1935, -1945, -1956	G or higher
easYgen-3400/3500 P2	8440-1936, -1937, -2078, -2079	NEW or higher

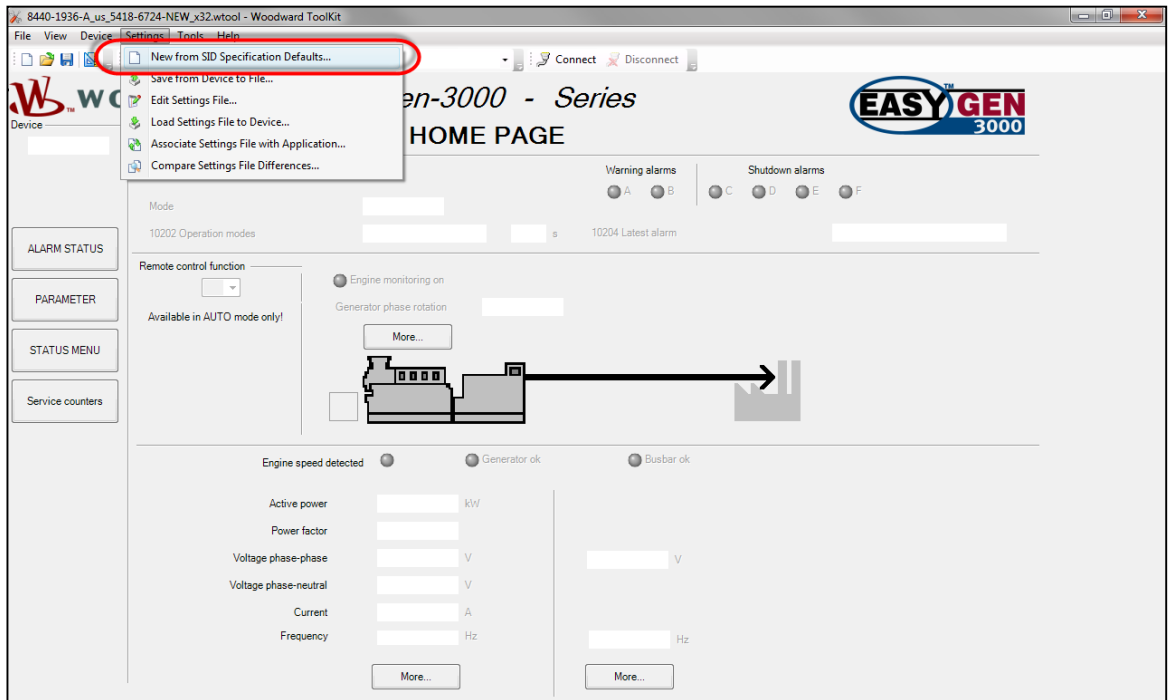
## Table of Contents

easYgen-3000.....	1
‘How to create new complete/partial settings files offline’ .....	1
Optional Supplementary Information.....	1
General Information .....	2
Personnel .....	2
Requirements.....	3
Hardware and Software.....	3
Documentation .....	3
Introduction.....	4
Creating a new complete settings file .....	5
1. Open the configuration tool (*.wtool file) for the respective controller .....	5
2. Creating Partial Settings.....	10
3. Editing partial or complete settings file without opening wtool of the respective device .....	13

## Creating a new complete settings file

### 1. Open the configuration tool (\*.wtool file) for the respective controller

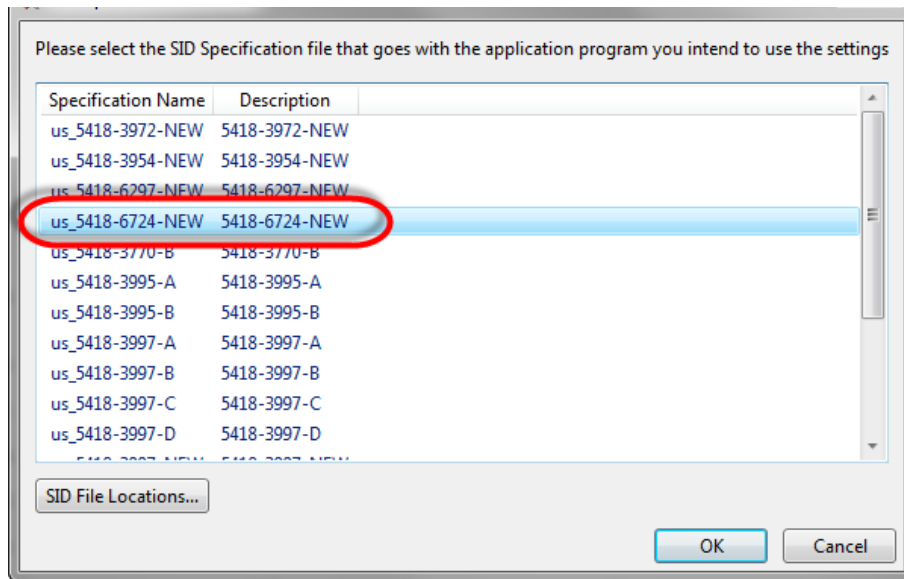
**STEP 1** From the main ToolKit window, click “Settings” then select “New from SID Specification Defaults...”.



**STEP 2** In next dialog select the Service Interface Definition (SID) Specification file, that you wish to create the settings file from and double-click or click “OK” after highlighting the right line

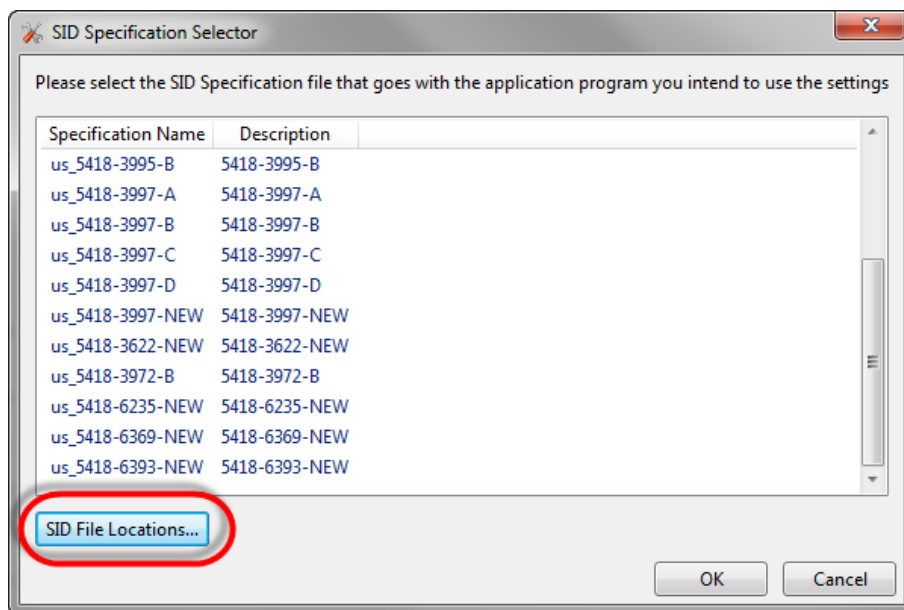


*The file name stands for the software number which can be seen in the top line of the Toolkit window, when the respective \*.wtool file is opened*

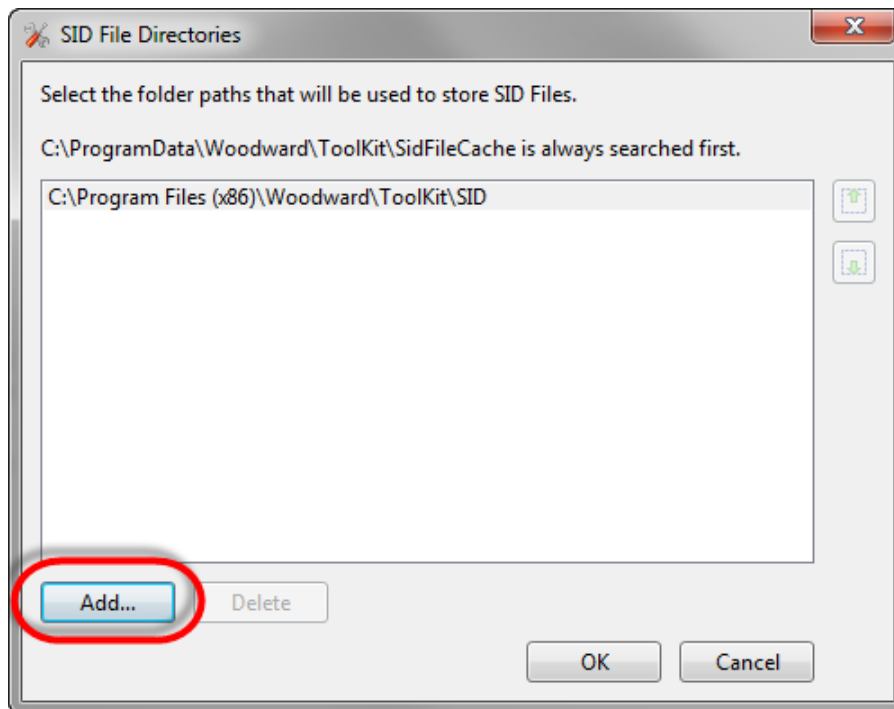


If the right file could be found in the list, then jump to step STEP 7:  
 If the file could not be found in the list, proceed with step STEP 3

**STEP 3** If the Specification file to be used is not listed or is located in a different directory, click “SID File Locations” to browse to the proper directory. Otherwise goto **STEP 5**



**STEP 4** In next dialog click “Add”

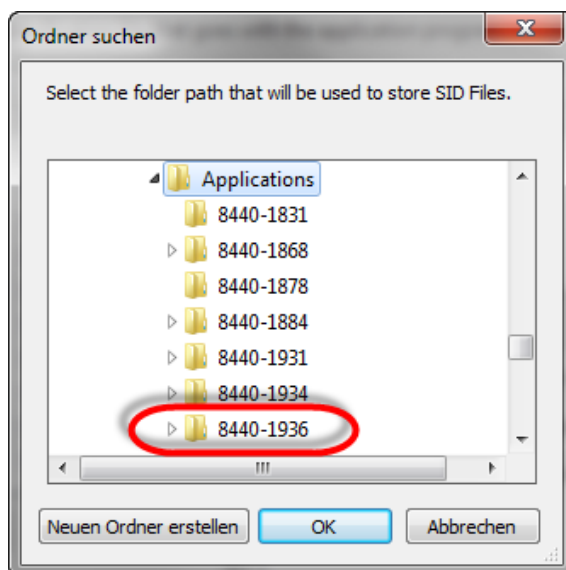


**STEP 5** Now browse to the proper directory and then click “OK”

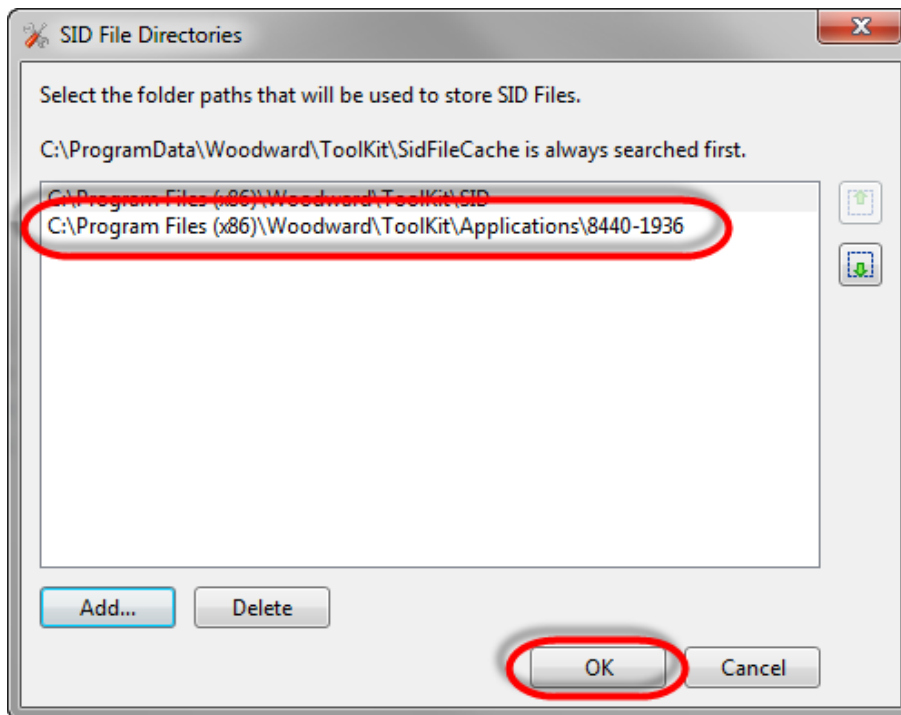


*By default, while installation of configuration files, these files are copied to:*

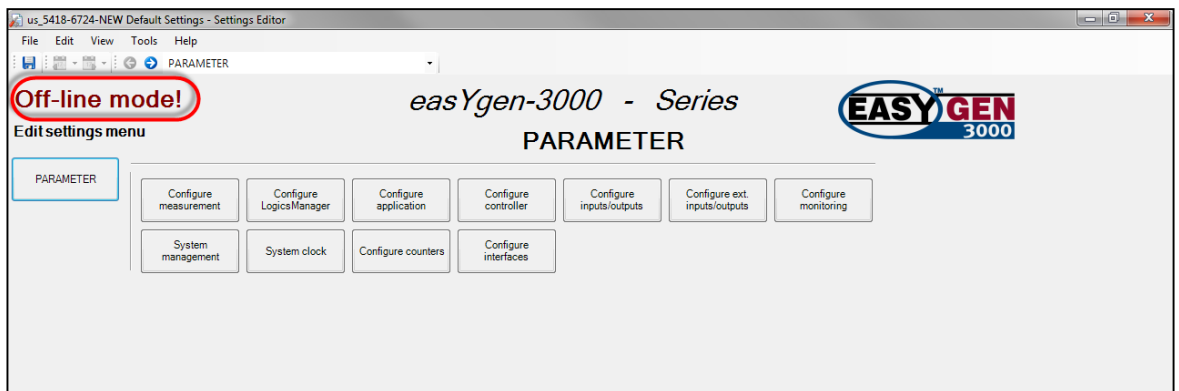
*“C:\Program Files (x86)\Woodward\ToolKit\Applications\8440-XXXX”*



**STEP 6** Now just click “OK” and then select the file as shown in **STEP 3**



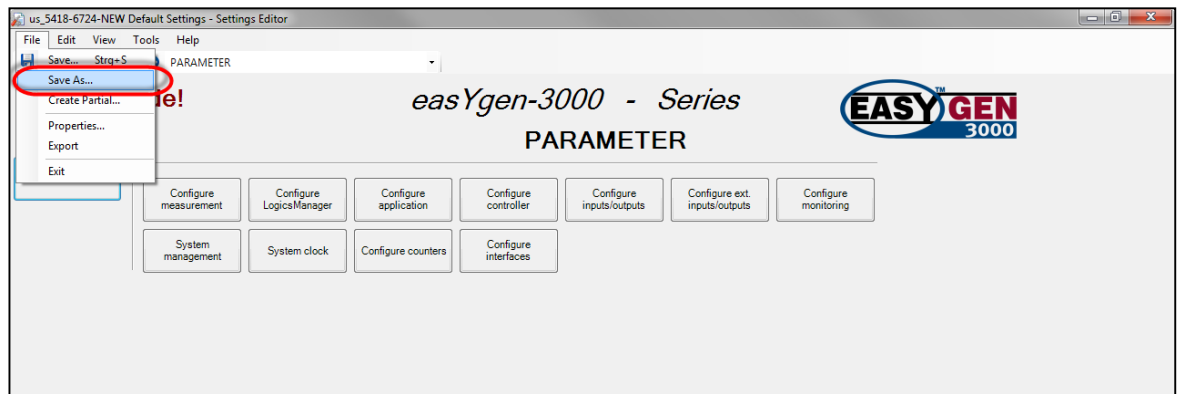
**STEP 7** In the “Off-line mode” window now all parameters can be accessed and modified the same way like being actually connected to the device.





**STEP 8** After modifying the parameters, you can save the settings, and later load it into the controller e.g. when you are on-site.  
To save just click “File” and select “Save As...”

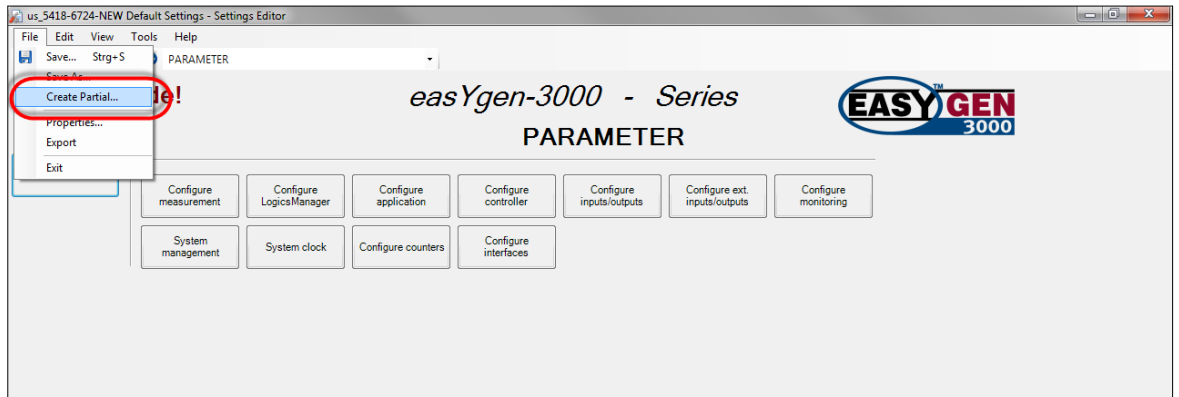
(e.g. the file can be named in a format like “CustomerName\_Generator#\_Date.wset”)



## 2. Creating Partial Settings

**STEP 9** Follow **STEP 1..4** until the “Off-line mode” window appears on the screen.

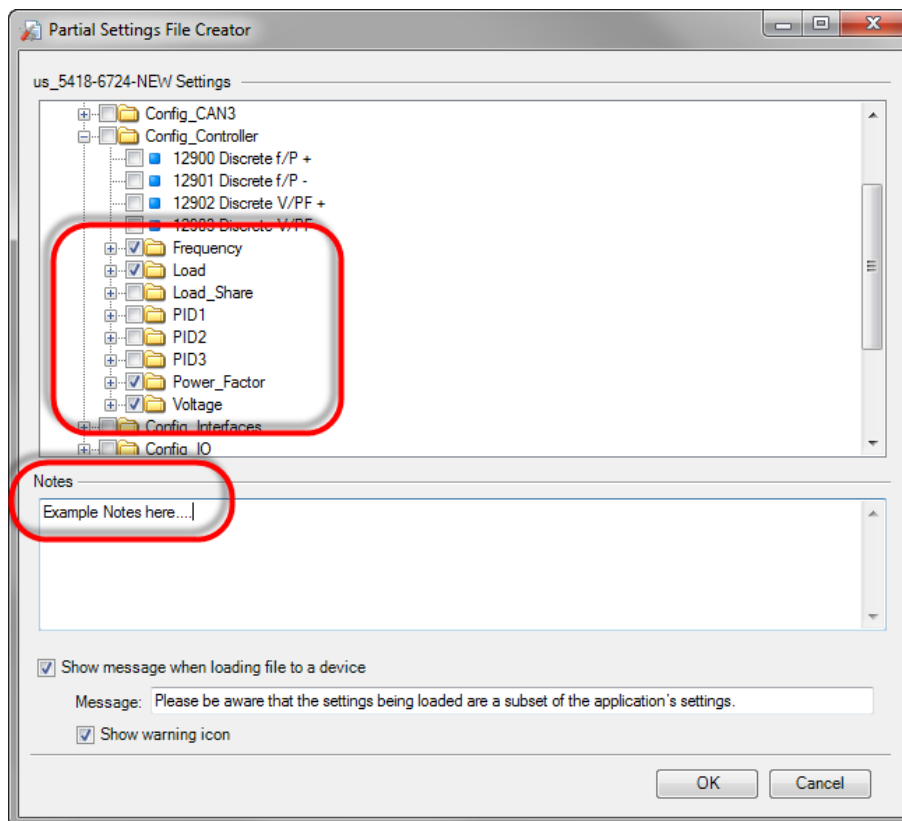
**STEP 10** Click “File”, then select “Create Partial”



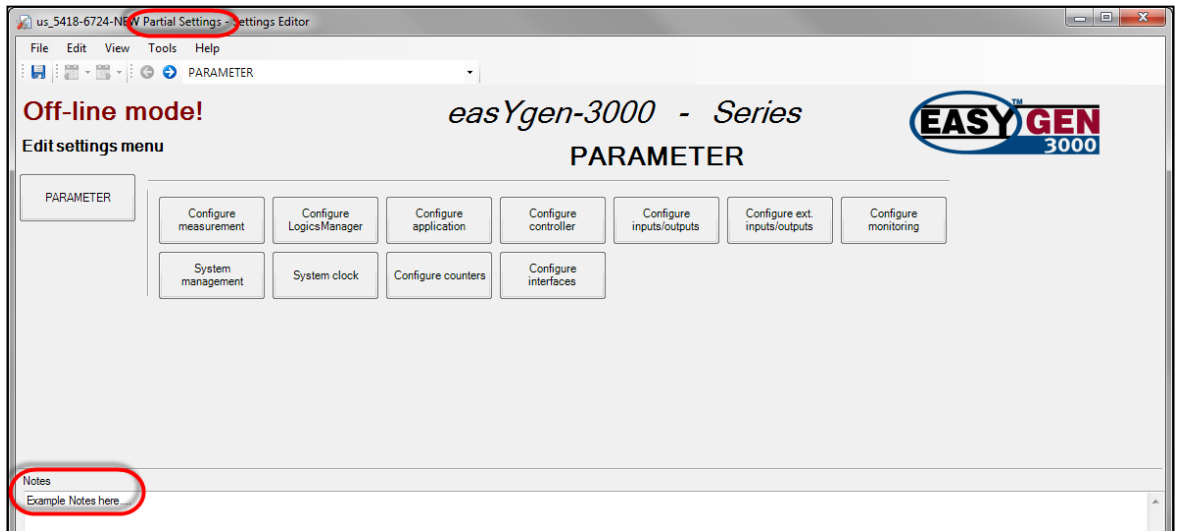
**STEP 11** In this screen select the parameters or parameter blocks, which are supposed to be saved and then click “OK”.

(Below e.g. Controller parameters for frequency, load, power factor and voltage are selected.)

Additionally there can be inserted notes e.g. to describe that partial settings file)

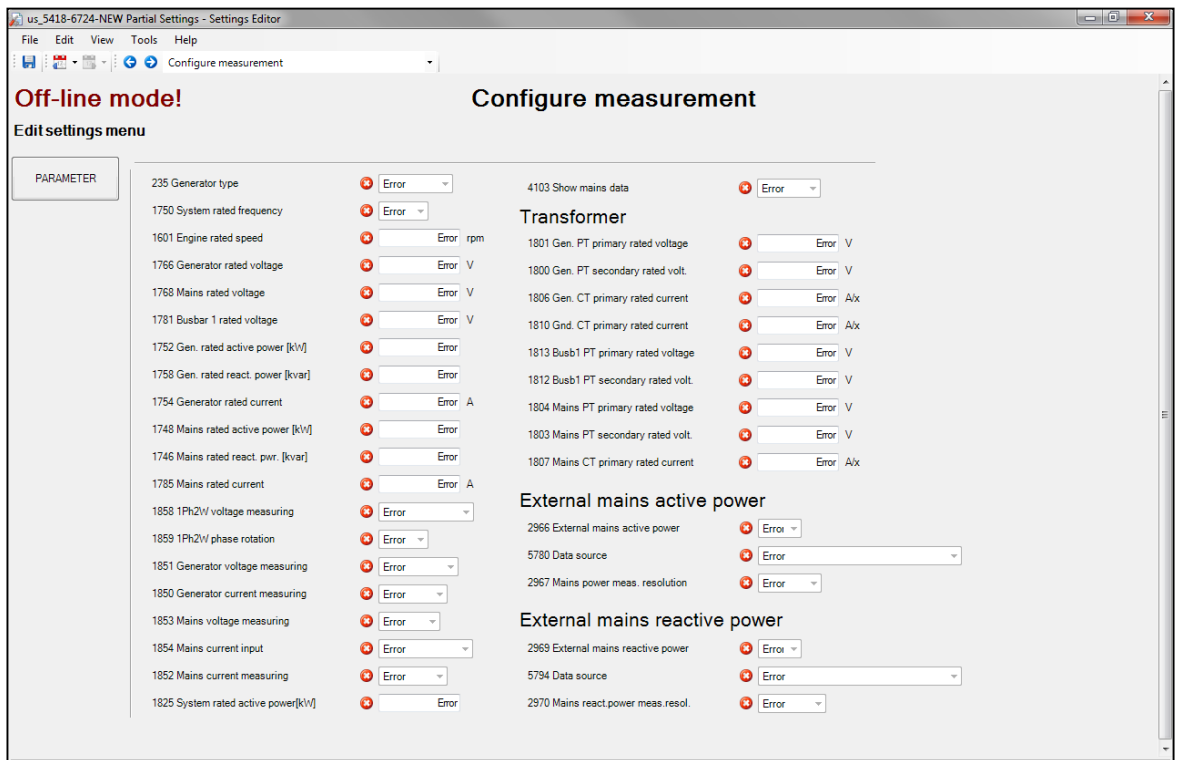


**STEP 12** Now in the “Off-line mode” window you can see the top line of the window that the screen is called “partial settings” and the notes you typed in **STEP 11** appear at the bottom of the window. Navigation through the parameters is done as usual



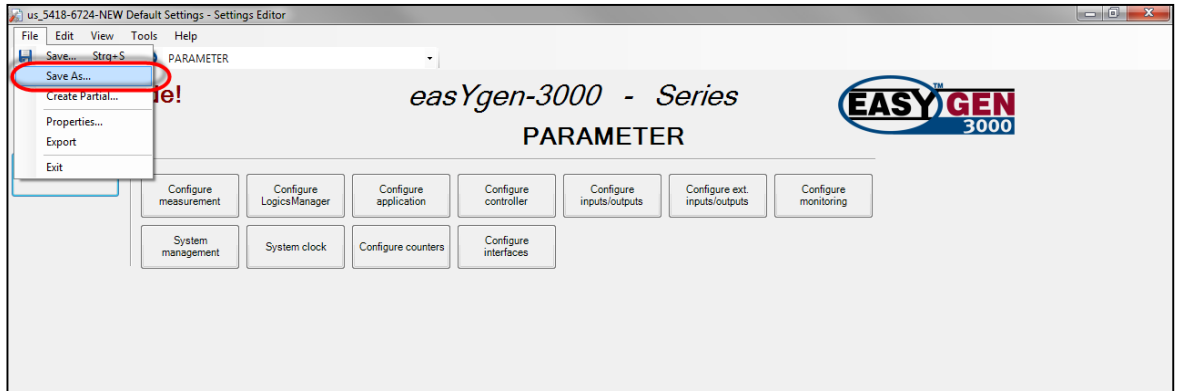
**STEP 13** In this off-line editor now only the selected parameters can be modified!

If you click into a screen which includes parameters that were not selected (**STEP 11**) it will look like below (There is shown “X” and the value is shown as “Error”):



**STEP 14** Save the settings file after modifying.

(The file may be named like e.g. "CustomerName\_Generator#\_Date\_PartialSetting.wset")

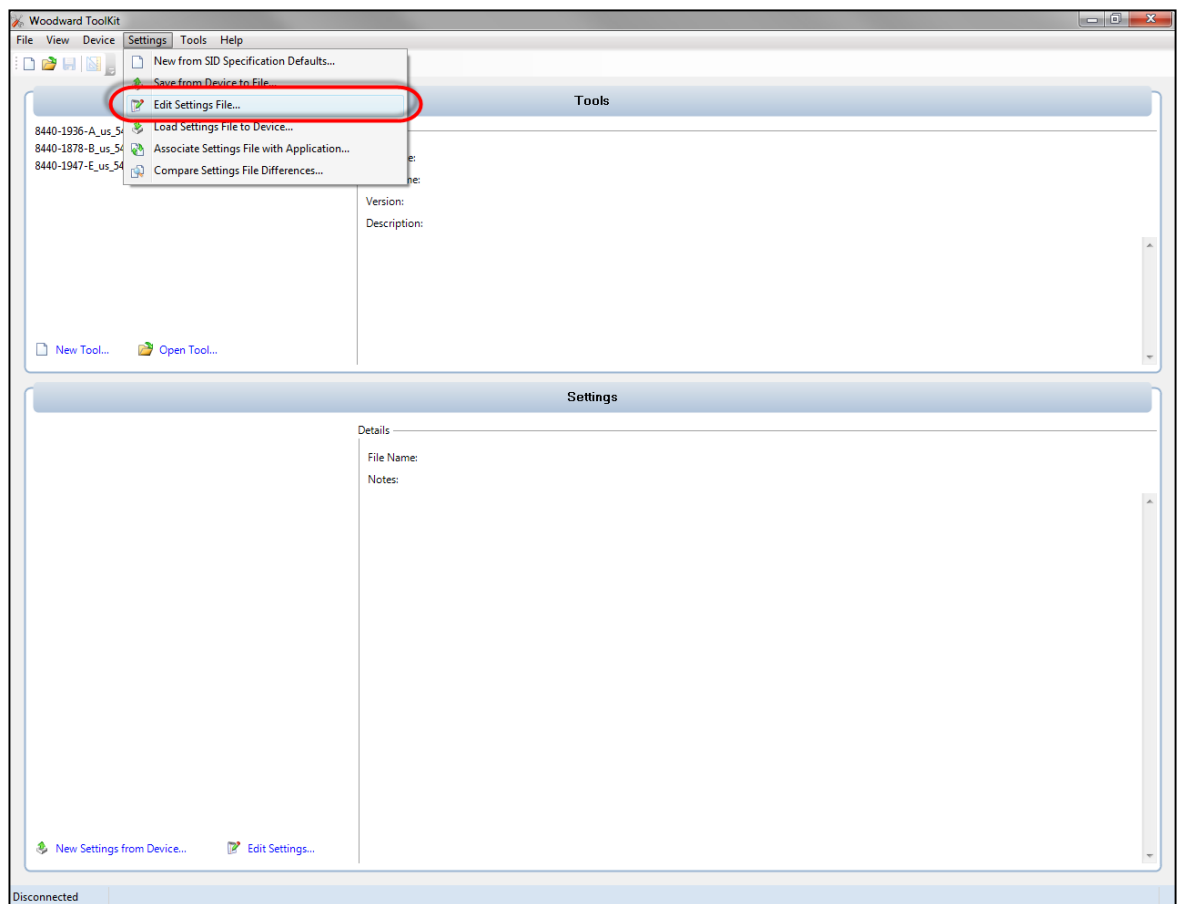


### 3. Editing partial or complete settings file without opening wtool of the respective device

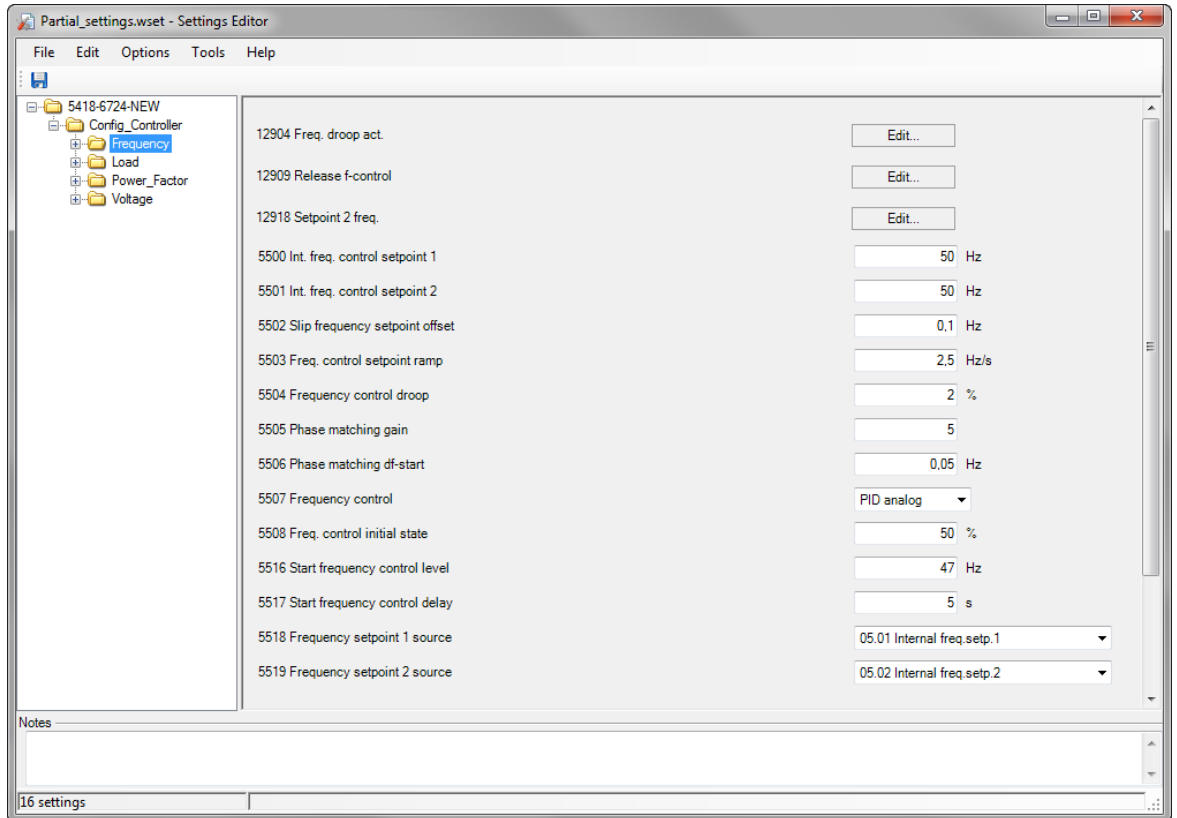
There are two possibilities that result in a so called “Generic Editor”:

1. By starting Toolkit software first
2. Or without starting Toolkit before

**STEP 1** Start the Toolkit software, click “Settings” and then select “Edit Settings File...”

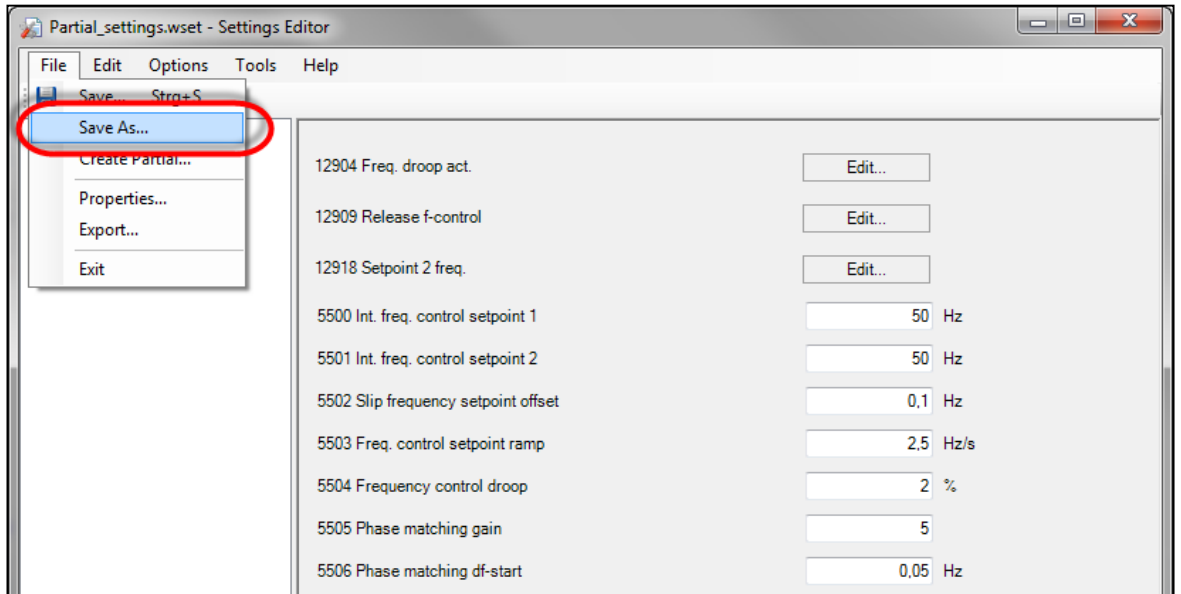


**STEP 2** Or without starting Toolkit, just browse into the directory where the settings file is saved and double-click it. Toolkit will start automatically in background and the file will be opened in a so called “Generic Editor”.



In this view only the selected partial parameters are available. All other parameters cannot be seen.

**STEP 3** Save the settings file after modifying.



We appreciate your comments about the content of our publications.

Please send comments to: [stgt-doc@woodward.com](mailto:stgt-doc@woodward.com)

Please reference publication 37572.

Homepage  
[www.woodward.com](http://www.woodward.com)

**Woodward has company-owned plants, subsidiaries, and branches,  
as well as authorized distributors and other authorized service and sales facilities throughout the world.  
Complete address / phone / fax / email information for all locations is available on our website.**

THE INFORMATION CONTAINED IN THIS APPLICATION NOTE IS PROVIDED AS IS WITHOUT REPRESENTATIONS OR WARRANTIES OF ANY KIND EXPRESSED OR IMPLIED. THE ADHERENCE TO THE INFORMATION CONTAINED IN THIS APPLICATION NOTE SHALL BE AT THE USER'S OWN RISK. WOODWARD EXPRESSLY DISCLAIMS ANY REPRESENTATIONS OR WARRANTIES CONCERNING WHETHER THE DELIVERABLES, OR SOFTWARE WILL PRODUCE ANY SPECIFIC RESULT OR PERFORM ANY PARTICULAR FUNCTION. WOODWARD FURTHER EXPRESSLY DISCLAIMS ANY LIABILITY FOR DAMAGES, LOSSES, COSTS OR EXPENSES ARISING DIRECTLY OR INDIRECTLY FROM THE USE OF THIS APPLICATION NOTE, UNLESS WOODWARD HAS PROVABLY ACTED WITH WILLFUL MISCONDUCT OR GROSS NEGLIGENCE.

WOODWARD RESERVES THE RIGHT TO UPDATE ANY PORTION OF THIS PUBLICATION AT ANY TIME. INFORMATION PROVIDED BY WOODWARD IS BELIEVED TO BE CORRECT AND RELIABLE. HOWEVER, NO RESPONSIBILITY IS ASSUMED BY WOODWARD UNLESS OTHERWISE EXPRESSLY UNDERTAKEN.