



RP-3000XT

Personalize your RP-3000XT
Optional Supplementary Information

General Information

The following alert boxes can be used in this publication:



“DANGER” indicates a hazardous situation which, if not avoided, will result in death or serious injury.



“WARNING” indicates a hazardous situation which, if not avoided, could result in death or serious injury.



“CAUTION”, used with the safety alert symbol, indicates a hazardous situation which, if not avoided, could result in minor or moderate injury.

NOTICE

“NOTICE” is used to address practices not related to personal injury.

IMPORTANT

“IMPORTANT” is used to address practices not related to personal injury.

Personnel



WARNING!
Hazards due to insufficiently qualified personnel!

If unqualified personnel perform work on or with the control unit hazards may arise which can cause serious injury and substantial damage to property.

- **Therefore, all work must only be carried out by appropriately qualified personnel.**

For further Product Support Options, Product Service Options, Returning Equipment for Repair, and/or Engineering Services please [download application note #37573](#).

Documentation itself



Read this entire application note and all other publications pertaining to the work to be performed before installing, operating, or servicing this equipment. Practice all plant and safety instructions and precautions.

Failure to follow instructions can cause personal injury and/or property damage!

Any unauthorized modifications to or use of this equipment outside its specified mechanical, electrical, or other operating limits may cause personal injury and/or property damage, including damage to the equipment.

Any such unauthorized modifications: constitute "misuse" and/or "negligence" within the meaning of the product warranty thereby excluding warranty coverage for any resulting damage, and invalidate product certifications or listings.



This publication may have been revised or updated since this copy was produced. If the cover of the publication states "Translation of the Original Instructions", the original source may have been updated since this translation was made.

Be sure to check manual 26311, *Revision Status & Distribution Restrictions of Woodward Technical Publications*, to verify whether this translation is up to date. Always compare with the original for technical specifications and for proper and safe installation and operation procedures. To verify that you have the latest revision, check manual 26311, *Revision Status & Distribution Restrictions of Woodward Technical Publications*, on the publications page of the Woodward website:

www.woodward.com/publications

The latest version of most publications is available on the publications page. If your publication is not there, please contact your customer service representative to get the latest copy.

Table of Contents

General Information..... 2
 Personnel..... 2
Documentation itself..... 3
Connect to device using any ftp client 5
In ftp client navigate to /HardDisk. Here you find two files: 7
Create your two files in the specified format as above. (in MS Paint for example)..... 8
Upload your files at /HardDisk directory in RP-3000XT..... 9
Reboot RP-3000XT..... 9

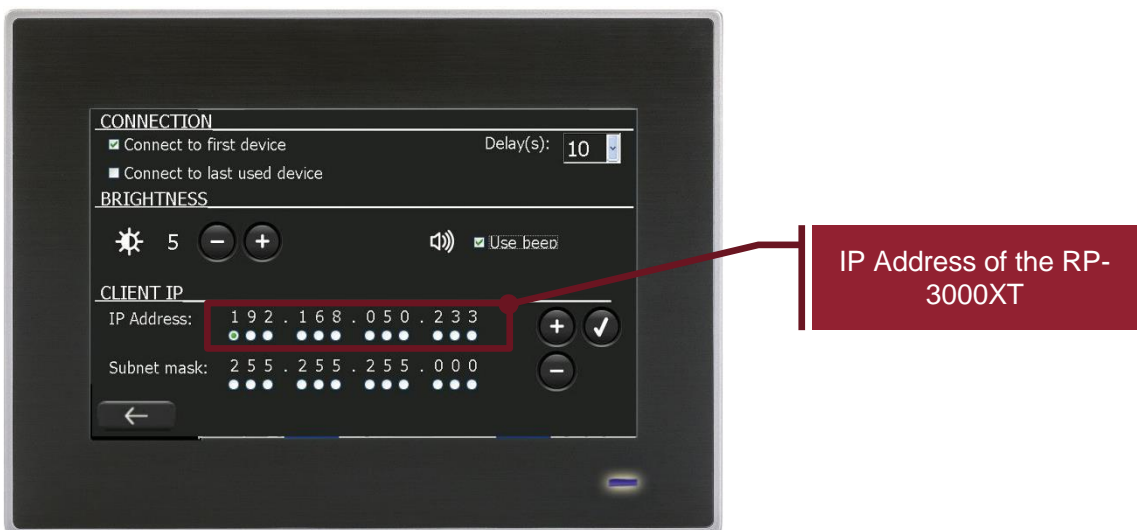
This document contains instructions that allows you to personalize your RP-3000XT. There are two areas that can be personalized.

- A splash screen that runs on the display during boot-up (Standard: Blue Screen)
- A logo that appears on the top left section on the RP HOME screen (Standard: Woodward logo)

Follow the below steps for updating these two files:

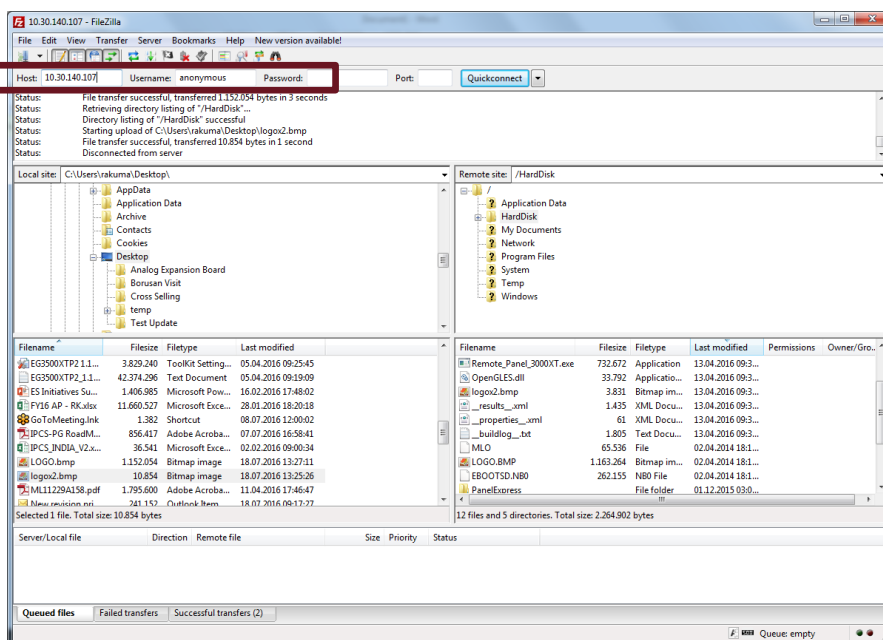
Connect to device using any ftp client

STEP 1 Lookup RP3000XT IP Address in options screen. (Power-Up the relay)



STEP 2 Anonymous login (with ftp client FileZilla for example)

IP Address here
Username:
anonymous



In ftp client navigate to /HardDisk. Here you find two files:

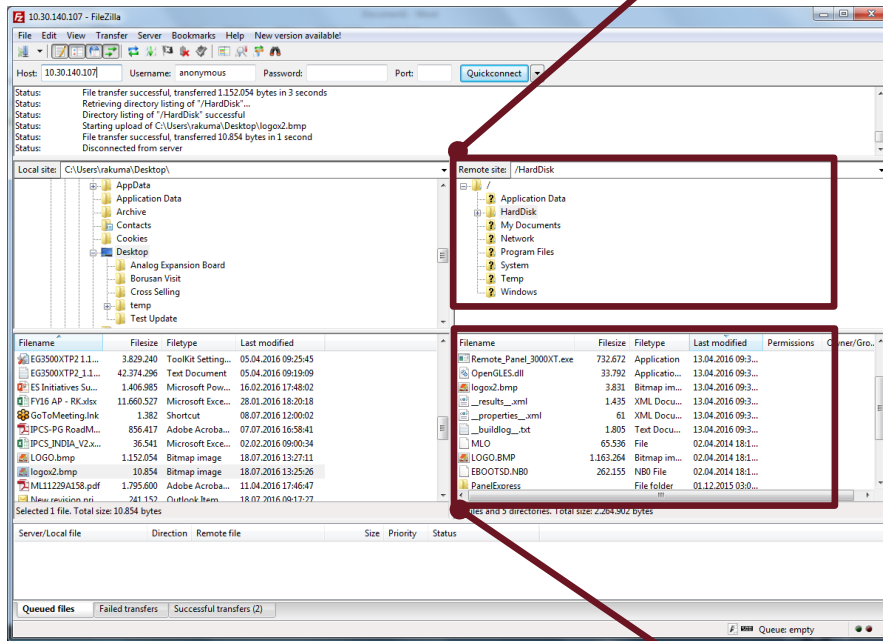
STEP 1 logox2.bmp – small logo visible in top-left corner during connection to easYgen device.

- 60x60 pixels
- 24bit-bitmap (.bmp) format

STEP 2 LOGO.BMP – big splash screen visible during startup.

- 800x480 pixels
- 24-bit-bitmap (.bmp) format

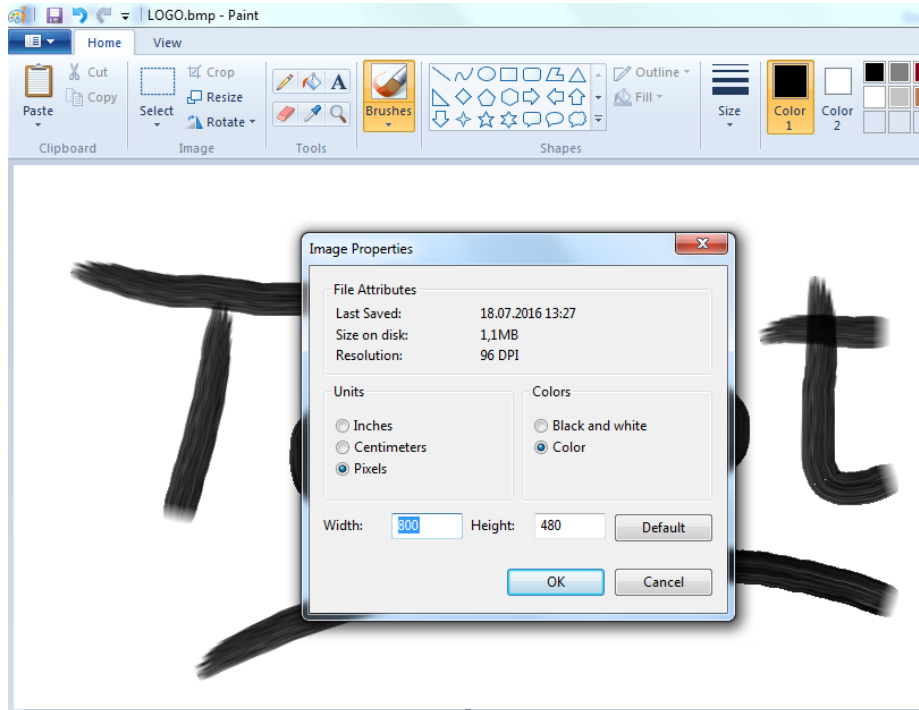
Navigate to HardDisk



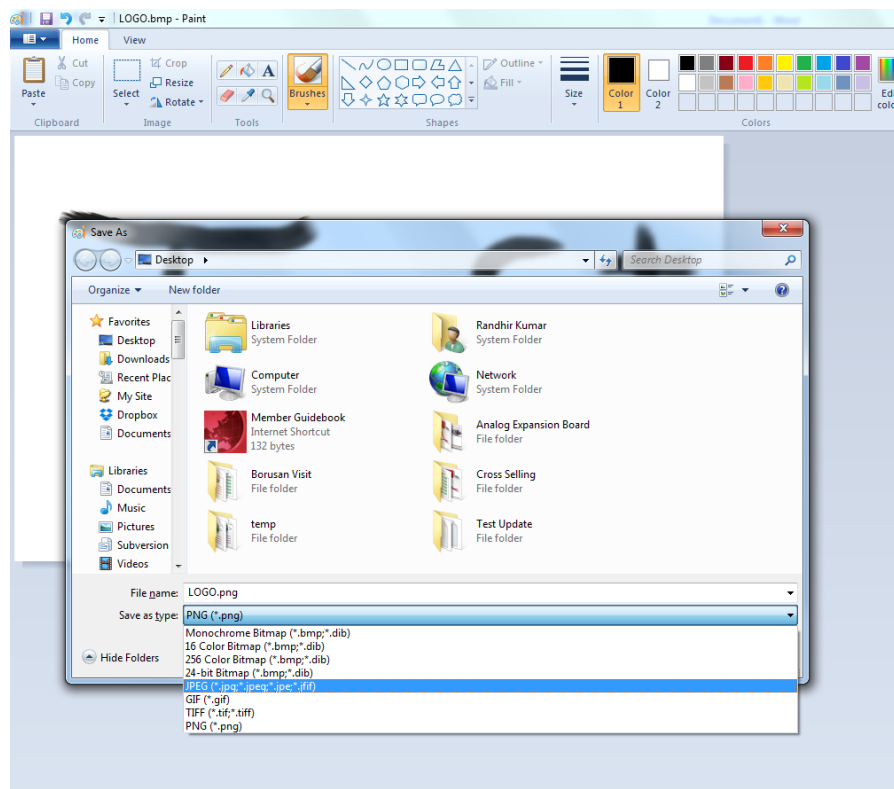
Here logox2.bmp and LOGO.bmp

Create your two files in the specified format as above. (in MS Paint for example)

STEP 3 Assign the Pixels (Ctrl + E)



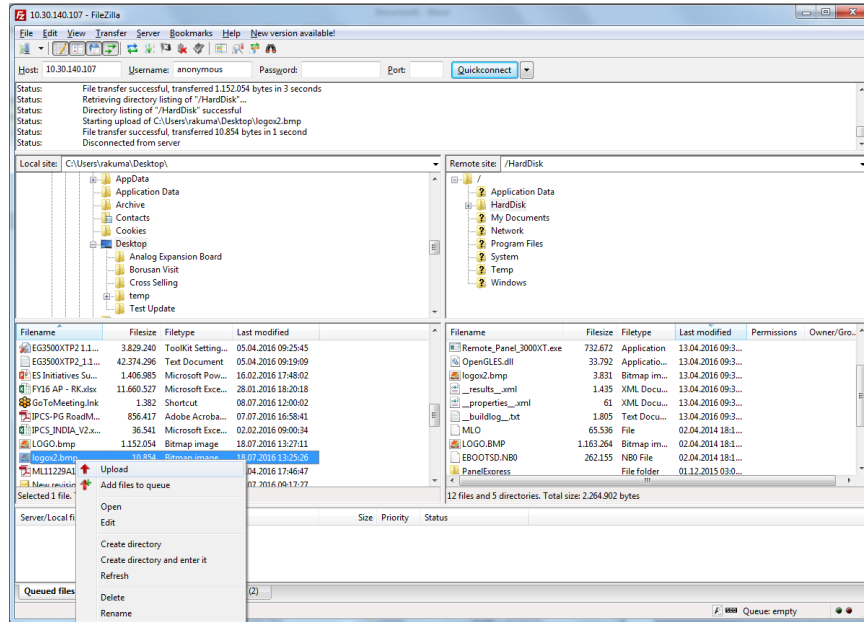
STEP 4 Save as > Other formats > 24-bit Bitmap



Upload your files at /HardDisk directory in RP-3000XT.

NOTICE

This action overwrites the corresponding two files in the RP memory. You may want to save a local copy before overwriting them.



Reboot RP-3000XT.

NOTICE

Woodward RP-3000XT is always delivered with the standard firmware inside unless there exists a specific contract between the two parties. This personalization is user's responsibility and excludes Woodward for any warranty & liability claims arising thereof. For any repaired item, Woodward delivers it with standard firmware. The personalization may be added again by the user.

We appreciate your comments about the content of our publications.

Please send comments to: stgt-doc@woodward.com

Please reference publication 37637.

Homepage
www.woodward.com

**Woodward has company-owned plants, subsidiaries, and branches,
as well as authorized distributors and other authorized service and sales facilities throughout the world.
Complete address / phone / fax / email information for all locations is available on our website.**

THE INFORMATION CONTAINED IN THIS APPLICATION NOTE IS PROVIDED AS IS WITHOUT REPRESENTATIONS OR WARRANTIES OF ANY KIND EXPRESSED OR IMPLIED. THE ADHERENCE TO THE INFORMATION CONTAINED IN THIS APPLICATION NOTE SHALL BE AT THE USER'S OWN RISK. WOODWARD EXPRESSLY DISCLAIMS ANY REPRESENTATIONS OR WARRANTIES CONCERNING WHETHER THE DELIVERABLES, OR SOFTWARE WILL PRODUCE ANY SPECIFIC RESULT OR PERFORM ANY PARTICULAR FUNCTION. WOODWARD FURTHER EXPRESSLY DISCLAIMS ANY LIABILITY FOR DAMAGES, LOSSES, COSTS OR EXPENSES ARISING DIRECTLY OR INDIRECTLY FROM THE USE OF THIS APPLICATION NOTE, UNLESS WOODWARD HAS PROVABLY ACTED WITH WILLFUL MISCONDUCT OR GROSS NEGLIGENCE.

WOODWARD RESERVES THE RIGHT TO UPDATE ANY PORTION OF THIS PUBLICATION AT ANY TIME. INFORMATION PROVIDED BY WOODWARD IS BELIEVED TO BE CORRECT AND RELIABLE. HOWEVER, NO RESPONSIBILITY IS ASSUMED BY WOODWARD UNLESS OTHERWISE EXPRESSLY UNDERTAKEN.